

**LIVE IN A
COMMUNITY
OF POSSIBILITIES**

COBE

RATCHADA - RAMA 9



CO-BEING
COMMUNITY

PROJECT INFORMATION

Land Area	12-2-69.6 Rai
Residential	1,612 Units
Commercial	8 Units
Parking Area	740 Lots

UNIT PLANS

DESIGN
FOR
LIVING

FUNCTION &
DESIGN

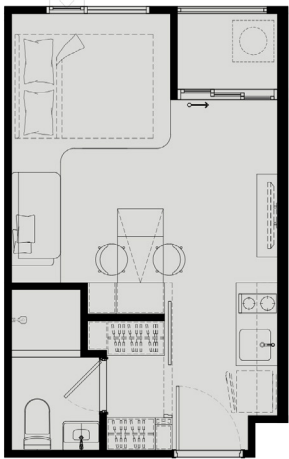
Embrace Your Desired Lifestyle. Curate a Dreamy Personal Space. Tailored for the New Generation’s Vibe. Exude Perfect Fusion of Function and Aesthetically Pleasing Design.

STUDIO

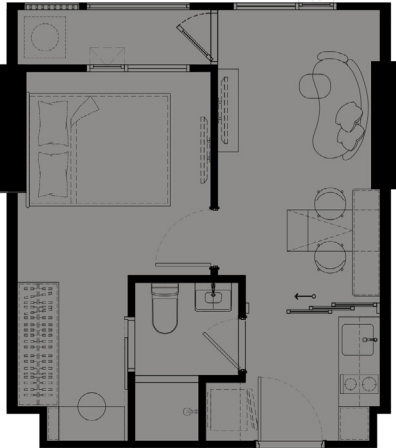


A COMPUTER-GENERATED IMAGE FOR ADVERTISEMENT PURPOSE ONLY

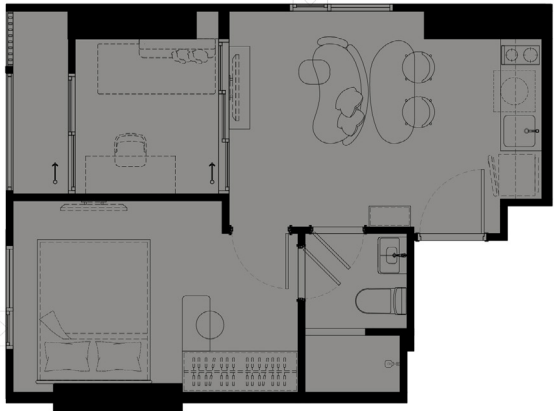
STUDIO A2 | 24.50 SQ.M.



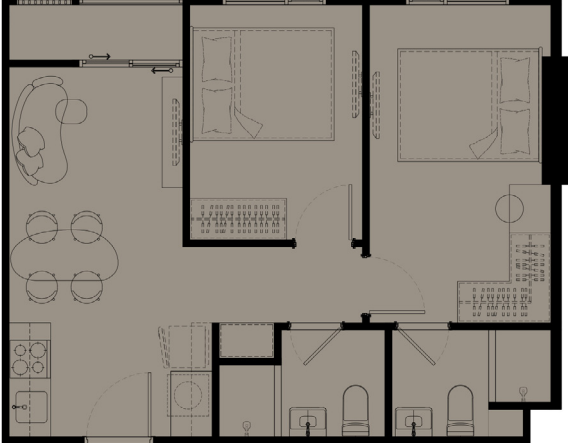
1 BEDROOM B4 | 33.10 SQ.M.

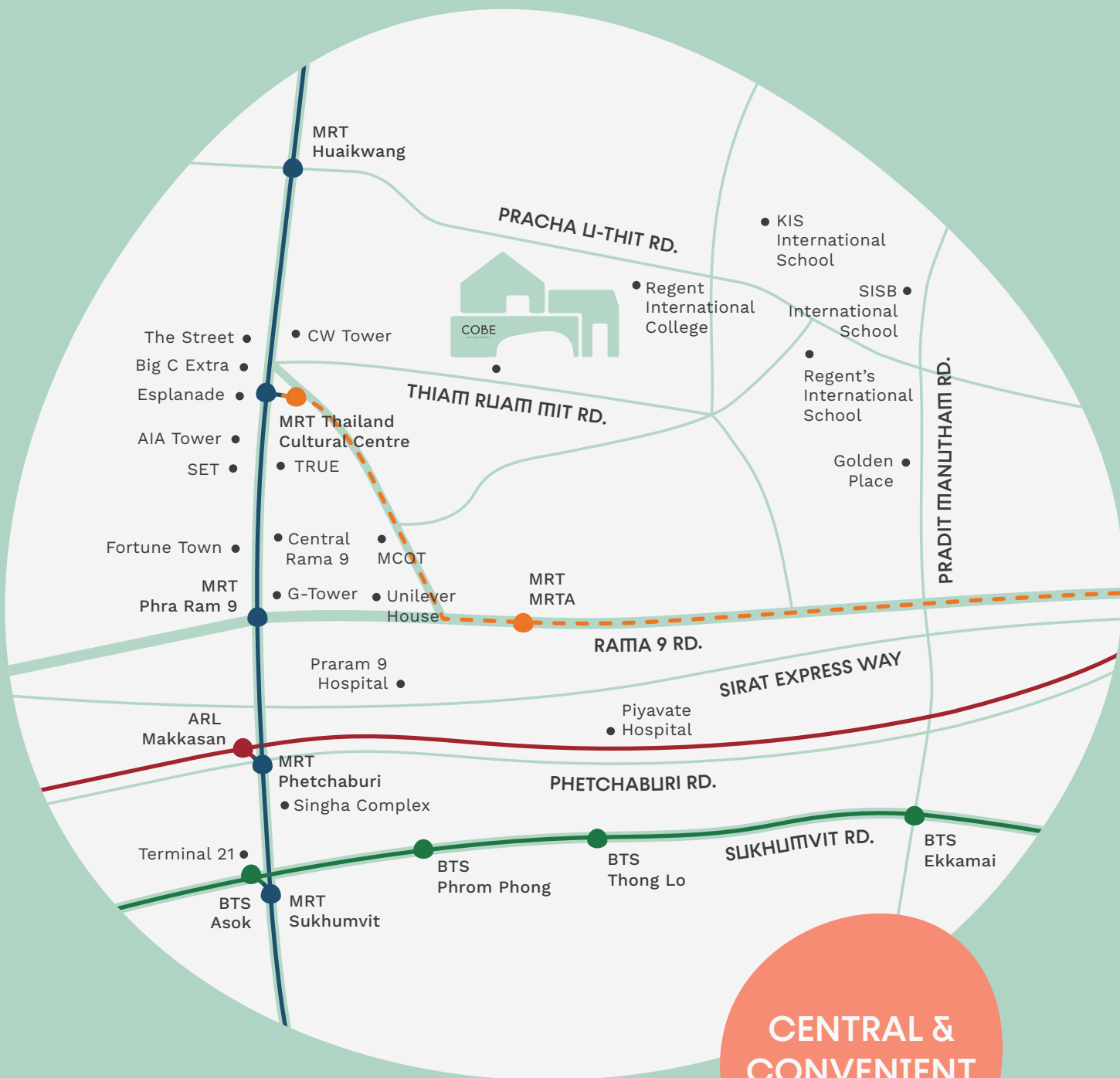


1 BEDROOM PLUS C2 | 36.50 SQ.M.



2 BEDROOMS D1 | 50.20 SQ.M.





**CENTRAL &
CONVENIENT**

COBE
RATCHADA - RAMA 9

**MORE INFO
SCAN HERE**



LINE @ SC ASSET GLOBAL

The Project Owner and the Land Owner are SC Asset Corporation PLC by Chief Executive Officer Mr. Nuttaphong Kunakornwong. The Project is located at Thiam Ruam Mit Road, Huai Kwang Sub-district, Huai Kwang District, Bangkok. The Land Title Deed Numbers are 5166, 7104, 7105, 5167, 7106, 7078, 7079, 7080, 7081, 7082, 7083, 7084, 7085 and 3221, with an approximate area of 12-2-69.6 Rais (5,069.6 Square Wah). The construction is expected to start in November 2023 and be completed in December 2025.